

Walkthrough: Explore the MuleSoft RPA Recorder

In this walkthrough, you will quickly explore the main features of the RPA Recorder before actually capturing an RPA process flow in the next walkthrough. You will:

- Run the RPA Recorder on a Windows system.
- Start to explore the main menu options.
- Pause and restart the RPA Recorder.
- Add BPMN elements to the BPMN diagram in the RPA Recorder while the RPA Recorder is paused.

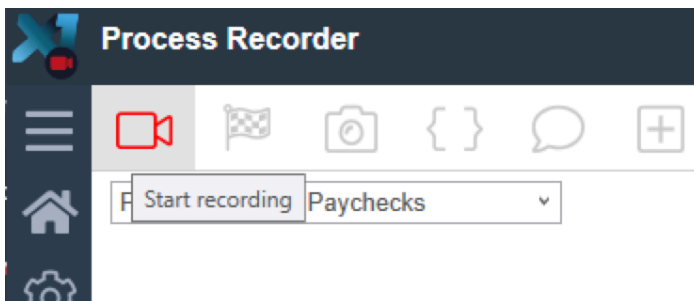
Prepare to run the RPA Recorder

1. Save the current RPA process BPMN design to a file on the Windows system before starting the RPA Recorder.

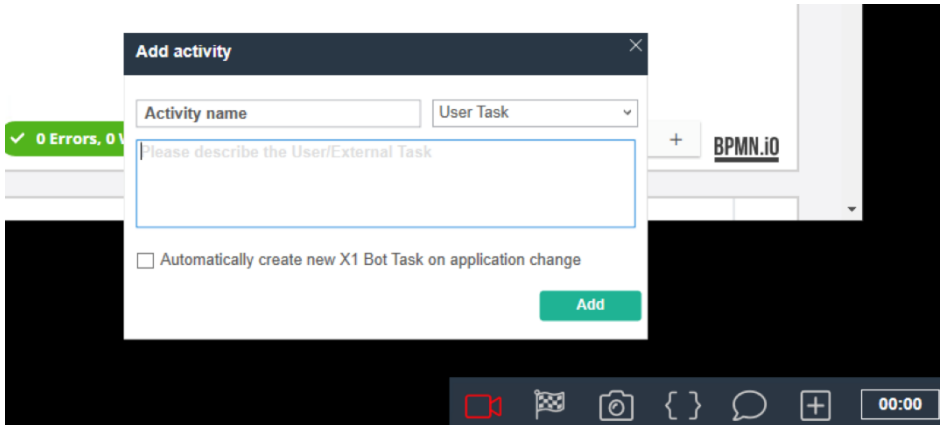
Note: In the last unit, you learned that when you use the RPA Recorder, whatever BPMN is currently displayed will be overwritten. So the first step is to save the initial BPMN design to the local hard drive. In the next unit, you'll learn how to merge this original BPMN with the results of the RPA Recorder.

Run the RPA Recorder

2. In the left-side menu, click the **Home** icon; the RPA Process Designer should appear again.
3. In the upper-left process menu, click the **Start recording** icon.

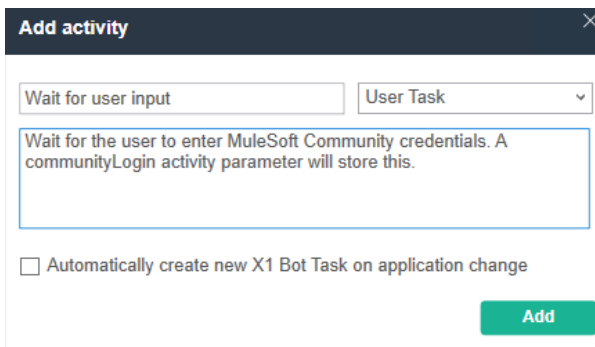


4. Verify you see the **Add activity** dialog open, and in the lower-right of the screen you see the RPA Recorder main menu.

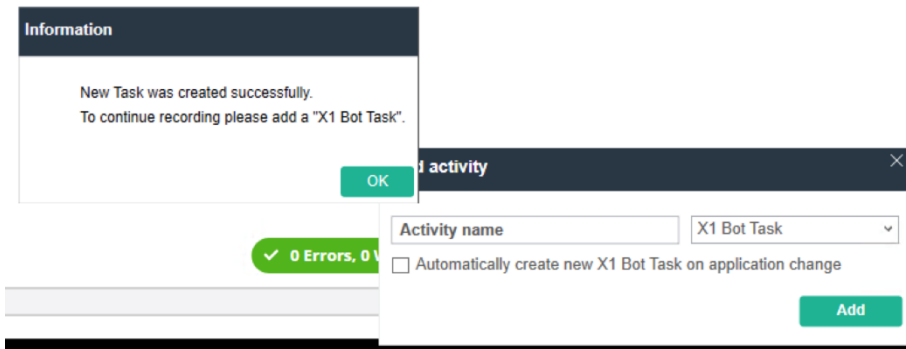


Add a User Task Activity to the Beginning of the Flow

5. In the Add activity dialog box, click the **Task** drop-down list; you should see User Task, RPA Bot Task, and External Task.
6. Change the type to User Task, name the activity Wait for user input, and in the description type Wait for the user to enter MuleSoft Community credentials. A communityLogin activity parameter will store this.
7. Uncheck **Automatically create new X1 Bot Task on application change**.



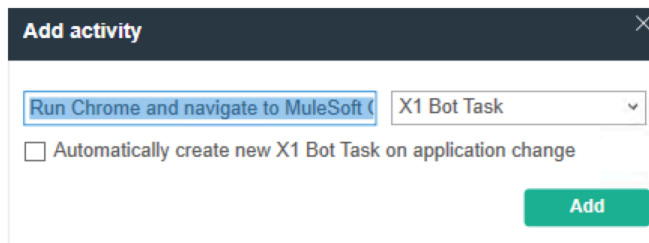
- Click **Add**; you should see an Information alert indicating the New Task was created successfully.



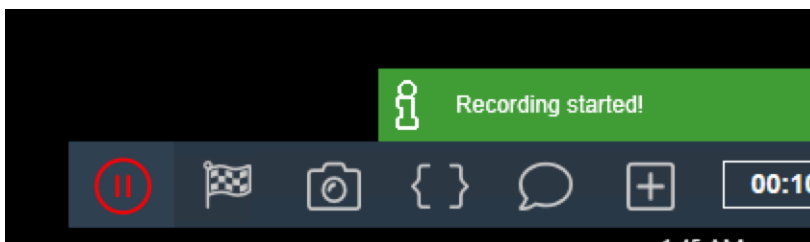
- Click **OK**.

Add an RPA Bot Task After the User Task

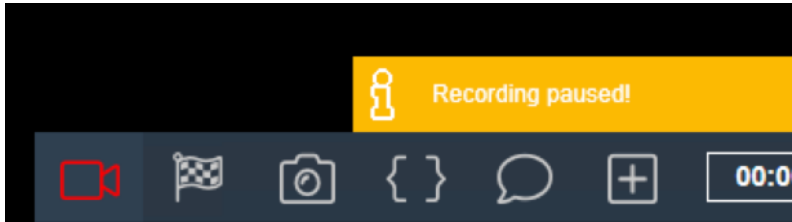
- Configure the Add activity dialog box with an RPA Bot Task named **Run Chrome and navigate to MuleSoft Community Meetups page**.
- Make sure the **Automatically create new RPA Bot Task on application change** checkbox is unchecked.



- Click **Add**; the left-most record menu icon should change to a pause icon, and the information message **Recording started!** should appear just above the RPA Recorder main menu.



13. In the RPA Recorder main menu, click **Pause recording**; the information message should change to **Recording paused!**.



14. Keep the MuleSoft RPA Recorder paused until you start the walkthrough in the next unit.

Summary

In this walkthrough you started the MuleSoft RPA Recorder and you explored the main menu options. Now you are ready to run the MuleSoft RPA Recorder to capture the requirements for the class use case.